



| LOCAL
| PLAN | Braintree
District
Council
Consultation
Statement

October 2019 Addendum



Introduction

The purpose of this addendum is to update the Braintree District Council Consultation Statement for the Local Plan (Sections 1 and 2) to include the consultation activities undertaken in the period between submission of the Local Plan in October 2017 and the conclusion of the technical section 1 examination consultation in September 2019. This addendum will be submitted to the inspector along with the documents subject to consultation over the summer.

This addendum will provide an overview of the consultation process including a list of the people and organisations who were specifically invited to make a representation. There is a note at the end to describe the consultation methods used during the production of the Additional Sustainability Appraisal.

Background

The Braintree Local Plan was subject of a number of public consultations leading up to submission to the Secretary of State (SoS) for examination in October 2017. This included consultations held in accordance to regulations 16 and 18.

An Inspector appointed by the SoS and a two week examination hearing session were held by January 2018 followed by an additional week May 2018. Following these sessions, the Inspector wrote to the Council outlining his interim findings. He suggested that additional evidence would be required to make the plan sound and that this evidence would be subject to public consultation.

The table below is a summary of the public consultation stages completed so far. Having completed the Technical Section 1 Examination, the development plan is awaiting scheduling of further hearing sessions.

Development Plan Stage	Consultation Period
Local Plan Issues and Scoping January 2015	26 th January to 6 th March 2015
Local Plan Draft for Consultation 2016	27 th June to 19 th August 2016
Local Plan Publication Draft Local Plan	2017 16 th June to 28 th July 2017
Section 1 Examination Hearing Sessions week 1-2	January 2018
Section 1 Examination Hearing Sessions week 3	May 2018
Technical Section 1 Examination	19 th August to 30 th September 2019
Section 1 Examination Hearing Sessions week 4+	TBC
Inspector's Reporting	TBC
Section 2 Examination	TBC

Title of the consultation, consultation period, and the relevant planning regulations.

This addendum covers the consultation for Technical Section 1 Examination which is the additional evidence requested by the Inspector in his letter IED11. The requested additional evidence was published in June 2019 and subject to a six public consultation from 19th August to 30th September 2019.

Unlike the previous stages of plan preparation, this stage is not specifically covered by the Town and Country planning 2012 regulations however for practical purposes the consultation was held in conformity with regulation 18. This consultation is also not covered by the statement of community

involvement (2013) however it was, regardless, undertaken with general conformity with the statement.

In every practical sense, the Council has undertaken a consultation that is consistent in quality with previous consultations for regulations 16, 18 and 19.

Key aspects of the consultation and where appropriate main changes arising from the previous consultation.

In his Section 1 post hearing letter 8th June 2018, the inspector reasoned that the sustainability appraisal, employment, viability, delivery and Rapid Transit System evidence was inadequate to justify the three proposed Garden Communities. In response the NEAS commissioned a series of additional evidence documents that were published in August 2019 as itemised below.

To reflect the changes made resulting from the hearing sessions, a document tabling the suggested amendments to the Local Plan was also published for consultation. This summarises the proposed main changes to the Section 1 Local Plan compared to the reg18 submission.

An update to the Habitats Regulation Assessment (HRA) was also necessary to ensure it is compatible with the CJEU ruling in *People over Wind, Peter Sweetman v Coillte Teoranta*.

Documents included in the consultation:

- Suggested Amendments to the Publication Draft Braintree, Colchester & Tendring Local Plans: Section One - July 2019
- Habitats Regulation Assessment: NEA Strategic Section 1 Update
- Modal Share Strategy for the North Essex Garden Communities
- North Essex Garden Communities: Infrastructure Planning, Phasing and Delivery
- North Essex Authorities: Infrastructure Order of Costs Estimate
- North Essex Authorities: Build Out Rates at the Garden Communities
- North Essex Authorities: Delivery Mechanisms Position Statement
- North Essex Authorities: Section 1 Viability Assessment Update
- North Essex Authorities: State Aid Position Statement
- North Essex Garden Communities: Employment Provision
- North Essex Rapid Transit System: From Vision to Plan
- Additional Sustainability Appraisal*

*The Additional Sustainability Appraisal comprises of the following sections:

- Executive Summary
- Non Technical Summary
- Main Report
- Appendix 1 - Method Scoping Statement Consultation Responses
- Appendix 2 - Workshop Record
- Appendix 3 - Evidence Review on Urban Form
- Appendix 4 - Site Information Forms
- Appendix 5 - Detailed Results of Stage 1 SA of Alternative Strategic Sites
- Appendix 6 - Identification of Spatial Strategy Alternatives
- Appendix 7 - Detailed Results of Stage 2 SA of Alternative Spatial Strategies
- Appendix 8 - Reasons for Rejection or Endorsement of Alternative Spatial Strategies

Which bodies and persons the local planning authority invited to make representations

An email or letter informing consultees of consultation dates, consultation material, how to view and how to respond was sent to:

- All statutory consultees (see Annex 1 (main report))
- Consultees on the Local Plan consultation list (over 3,000 individuals or organisations)
- All Parish Councils
- All examination participants (as updated)

General public and interested parties were alerted through:

- Advertising - a public notice in the local press, namely the Braintree & Witham Times. Public notices were published at the beginning of the consultation.
- The Council's website
- Social Media
- Newspaper Adverts
- Deposit points at Braintree Council, Braintree Library, Halstead Library and Witham Library
- Stakeholder workshop, Duty-to-Cooperate meetings.
- A special edition of the Council's magazine, "Contact" was sent to every household in the district – 65,000 copies printed and distributed.

Copies of the above have been reproduced in Annex 1 of this addendum.

All additional evidence documents were deposited at the Council Offices and copies made for Braintree, Halstead and Witham Libraries. Documents were made available on the Council's website in PDF format and also available through the Council's online consultation portal.

No consultation events were held on this occasion, although Officers were available to assist stakeholders wishing to make a response at the Council Offices and over the phone.

How those bodies and persons were invited to make representations

Similar to the reg 18 process, a letter or email was sent to statutory and non-statutory individuals and organisations using the Council's database of registered interested parties. Where an email address is available, this was used as the preferred method. Letters were sent to consultees without an email address or where the attempts to send an email failed.

Consultation responses were encouraged through the consultation portal accessible on the Council's website (based on the Objective platform), however comments in any format were acceptable through email or post. Any non-electronic responses were transposed into Objective by the Council. The deadline for responses was Monday 30th September at 5pm.

The list of statutory undertakers contacted has not changed and can be view in Annex 1 of the Braintree Consultation Statement – October 17.

The number of representations made and a summary of the main issues raised by the representations made

A total of circa 1000 responses were received across the documents (as counted by the number of consultation points) by around 800 individual and organisations, including statutory consultees.

In addition to this, 2 petitions were received which were included in the submitted documents but counted as part of a response.

All responses were processed and submitted to the Inspector by 10th October – on this occasion, no summaries of the consultation was possible. The document which garnered the most comments was the Additional Sustainability Appraisal, followed by the North Essex Rapid Transit System.

How any representations made have been taken into account in the plan preparation process.

Not applicable since the regulation 19 Publication Draft Local Plan is subject to examination. Only the Inspector appointed by the secretary of state may recommend changes to the plan in his report.

Note on the consultation undertaken for the SA

A separate public consultation was held for the Method Scoping Statement (methodology) for the Additional Sustainability Appraisal between 14 December 2018 and 1 February 2019, during the period when the Local Plan examination was suspended. The statutory undertakers, Natural England, Historic England and the Environment Agency were specifically contacted, as were all examination participants (as updated). This public consultation was open for comment from anyone.

One engagement event was held during the method scoping statement at Colchester Stadium. Representatives from LUC and the NEAs were present at the event and appointments were made with 13 stakeholders/organisations/individuals. The consultation response led to changes in the methodology of the SA as summarised at paragraph 2.87 to 2.92 of the Additional SA Main Report.

Another engagement event was held at Colchester Stadium on Friday March 29th. This event was open to all examination participants (as updated) however each stakeholder were allowed 2 delegates and RSVPs were required. The purpose of this event was to hold a Check and challenge workshop where the participants were presented the findings of Stage 1 SA assessment, followed by a Q&A session with LUC and the NEAs. This event led to further changes to the methodology of the SA. A workshop record containing the presentation slides and the workshop note is available at Appendix 2 of the Additional SA.

A limited consultation was undertaken with each site promotor via email pursuant to the completion of Site Information Proformas. These responses were published, following moderation by the NEAs to summerise the information, as Appendix 4 Additional SA.

Annex 1. Addendum list of consultation material

Reference	Consultation Material
TS1E01a – Statutory Consultees letter and email	Emails and letters announcing the consultation.
TS1E01b – Statutory Consultees letter and email	
TS1E02 - Local Plan leaflet Summer 2019	Circa 62,000 Local Plan leaflets (in the format of 'Contact' magazine) was distributed to every household.
TS1E03 – Instagram, Facebook and Twitter - example	Social media
TS1E04 - Libraries and exhibitions	Deposit point for a complete set of documents within Braintree District
TS1E05 - Response Form	Forms
TS1E06 - Email signature	Email signatures from NEA Councils

Our ref: North Essex Shared Section 1 Local Plan Examination. TS1E01a – Statutory Consultees letter and email
Submission Local Plan

Your ref:
Ask for: Planning Policy
Dial: 01376 551414
Ext: 2567
Date: 19th August 2019
Email: localplan@braintree.gov.uk



Planning Policy
Causeway House Braintree
Essex CM7 9HB
Tel: 01376 552525
Fax 01376 557787
www.braintree.gov.uk

XXXXXX

Dear Stakeholder,

You are receiving this letter because you have indicated a desire to be notified of future progress of the Local Plan including the North Essex shared Section 1 Local Plan Examination.

Background to the consultation

The Section 1 Local Plan Examination began in October 2017, and hearing sessions were held in January and May 2018. All the Examination documents are available on the www.braintree.gov.uk/NEAtechS1

After considering all the evidence and representations and the discussion at the hearing sessions, the Inspector wrote to the North Essex Authorities (NEAs) on 8 June 2018 (see Examination document IED/011). In his letter the Inspector identified those aspects of the Section 1 Local Plan and its evidence base which he considered required significant further work on the part of the NEAs. In that context the Inspector set out options for the NEAs to consider in determining its next steps in their Local Plan preparation.

Of these options the NEAs chose to pause the Examination and carry out the necessary further work on the evidence base and Sustainability Appraisal, and to bring forward any resulting revised strategic proposals, for the Section 1 Local Plan examination to consider. On 10 December 2018 the Inspector announced a pause in the Examination to enable this further work to take place (see Examination document IED/015).

North Essex Local Plan Technical Consultation

The NEAs are now carrying out a public consultation on the Additional Sustainability Appraisal, additional evidence base documents and the suggested amendments to the Section 1 Local Plan. These are the documents which have been prepared in response to the Inspector's 8 June 2018 letter (see Examination document IED/011). The consultation will run from 19 August to 30 September 2019. Anyone may submit comments, whether or not they have previously been involved in the Section 1 Local Plan Examination.

What will happen after the consultation?

After the public consultation has finished, the Examination of the Section 1 Local Plan will resume. The additional documents produced by the NEAs and all the comments that have been made on them will be forwarded to the Inspector who will consider them alongside all

the other evidence and representations already submitted on the Section 1 Local Plan.

Following this the Inspector will arrange further hearing sessions as part of the Examination. They will focus mainly on those aspects of the Section 1 Local Plan and its evidence base which the Inspector identified as requiring significant further work and any matters raised by the representations arising from this consultation. However, they may include other topics as necessary to inform his assessment of the soundness and legal compliance of the Section 1 Local Plan, as determined by the Inspector.

Those submitting comments during the public consultation will be able to indicate if they wish to take part in the further hearing sessions. The Inspector may invite others to take part if doing so would assist him in assessing the soundness and legal compliance of the Section 1 Local Plan.

The Inspector will fix the dates for the further hearing sessions after he has received and considered the additional documents produced by the NEAs and the comments made on them. As was the case for the previous hearing sessions, the Inspector will prepare a list of matters, issues and questions to focus discussion at the hearings, along with a guidance note to explain the procedure and the arrangements for submitting hearing statements.

At the end of the Examination the Inspector will produce a report for the NEAs setting out his conclusions and recommendations, including any recommended main modifications to the Section 1 Local Plan. Any main modifications which the Inspector may consider recommending will be the subject of further public consultation before the completion of his report.

Where can you find out more about the consultation?

The NEAs have created a dedicated online consultation portal which can be accessed via the following address: www.braintree.gov.uk/NEAtechS1. On the portal you can find out more information about the documents subject to the North Essex Local Plan Technical Consultation and how to make representations to the NEAs on them.

The NEAs have also placed copies of the consultation documents in the main libraries within their districts to ensure that those without internet access can respond to the consultation.

Please ensure you read the NEAs' Guidance Notes and the Inspector's Explanatory Note before responding to the consultation. Please note that you do not need to respond to each local authority – a single response either through the online consultation portal or via other means to one local authority (Braintree District Council, Tendring District Council or Colchester Borough Council) will be sufficient to ensure your consultation is properly submitted.

Kind regards



Emma Goodings
Head of Planning & Economic Development

Sung, Gary

From: Local Plan
Sent: 19 August 2019 11:36
To: Localplan@braintree.gov.uk
Subject: TECHNICAL SECTION 1 EXAMINATION 2019 - BRAINTREE DISTRICT COUNCIL

Dear Stakeholder,

You are receiving this email because you have indicated a desire to be notified of future progress of the Local Plan including the North Essex shared Section 1 Local Plan Examination.

Background to the consultation

The Section 1 Local Plan Examination began in October 2017, and hearing sessions were held in January and May 2018. All the Examination documents are available on the [Examination web page](#).

After considering all the evidence and representations and the discussion at the hearing sessions, the Inspector wrote to the North Essex Authorities (NEAs) on 8 June 2018 (see Examination document IED/011). In his letter the Inspector identified those aspects of the Section 1 Local Plan and its evidence base which he considered required significant further work on the part of the NEAs. In that context the Inspector set out options for the NEAs to consider in determining its next steps in their Local Plan preparation.

Of these options the NEAs chose to pause the Examination and carry out the necessary further work on the evidence base and Sustainability Appraisal, and to bring forward any resulting revised strategic proposals, for the Section 1 Local Plan examination to consider. On 10 December 2018 the Inspector announced a pause in the Examination to enable this further work to take place (see Examination document IED/015).

North Essex Local Plan Technical Consultation

The NEAs are now carrying out a public consultation on the Additional Sustainability Appraisal, additional evidence base documents and the suggested amendments to the Section 1 Local Plan. These are the documents which have been prepared in response to the Inspector's 8 June 2018 letter (see Examination document IED/011). The consultation will run from 19 August to 30 September 2019. Anyone may submit comments, whether or not they have previously been involved in the Section 1 Local Plan Examination.

What will happen after the consultation?

After the public consultation has finished, the Examination of the Section 1 Local Plan will resume. The additional documents produced by the NEAs and all the comments that have been made on them will be forwarded to the Inspector who will consider them alongside all the other evidence and representations already submitted on the Section 1 Local Plan.

Following this the Inspector will arrange further hearing sessions as part of the Examination. They will focus mainly on those aspects of the Section 1 Local Plan and its evidence base which the Inspector identified as requiring significant further work and any matters raised by the representations arising from this consultation. However, they may include other topics as necessary to inform his assessment of the soundness and legal compliance of the Section 1 Local Plan, as determined by the Inspector.

Those submitting comments during the public consultation will be able to indicate if they wish to take part in the further hearing sessions. The Inspector may invite others to take part if doing so would assist him in assessing the soundness and legal compliance of the Section 1 Local Plan.

The Inspector will fix the dates for the further hearing sessions after he has received and considered the additional documents produced by the NEAs and the comments made on them. As was the case for the previous hearing sessions, the Inspector will prepare a list of matters, issues and questions to focus discussion at the hearings, along with a guidance note to explain the procedure and the arrangements for submitting hearing statements.

At the end of the Examination the Inspector will produce a report for the NEAs setting out his conclusions and recommendations, including any recommended main modifications to the Section 1 Local Plan. Any main modifications which the Inspector may consider recommending will be the subject of further public consultation before the completion of his report.

Where can you find out more about the consultation?

The NEAs have created a dedicated online consultation portal which can be accessed via the following address: www.braintree.gov.uk/NEAtechS1. On the portal you can find out more information about the documents subject to the North Essex Local Plan Technical Consultation and how to make representations to the NEAs on them.

The NEAs have also placed copies of the consultation documents in the main libraries within their districts to ensure that those without internet access can respond to the consultation.

Please ensure you read the NEAs' Guidance Notes and the Inspector's Explanatory Note before responding to the consultation. Please note that you do not need to respond to each local authority – a single response either through the online consultation portal or via other means to one local authority (Braintree District Council, Tendring District Council or Colchester Borough Council) will be sufficient to ensure your consultation is properly submitted.

Planning Policy Team

Braintree District Council, Causeway House, Bocking End, Braintree, Essex, CM7 9HB

01376 552525 ext 2567

Web site: www.braintree.gov.uk/NEAtechS1

Email: localplan@braintree.gov.uk





THE LOCAL PLAN

AUGUST / SEPTEMBER 2019



SEE INSIDE:

- What is a Local Plan?
- Story so far...
- Why garden communities?
- Have your say

www.braintree.gov.uk/NEAtechS1

THE LOCAL PLAN

WHAT IS A LOCAL PLAN?

A Local Plan is the basis for the future development of homes, employment, business and much more. Planning applications, whatever their size and proposed use, are assessed against the policies contained in the Local Plan.

Having a Local Plan is really important because it sets the direction for future development but it also gives us more power to stop inappropriate development.

Local Plans are not just about new homes but must ensure that housing growth is supported by infrastructure, jobs and community facilities.

THE STORY SO FAR:

Every council has to plan for additional new homes.

Braintree District Council, Colchester Borough Council and Tendring District Council have been working together since 2015 to make sure development is beneficial for North Essex. This resulted in a draft strategic Section 1 Local Plan which is shared by all three councils within their Local Plans. The Section 1 Local Plan includes policies on cross boundary issues including infrastructure and housing. It also includes proposals for three new garden communities.

The Local Plan has undergone a number of rounds of public consultation and was submitted to the Secretary of State in October 2017. A Planning Inspector was appointed to carry out an independent examination to look at Section 1 of the Local Plans and examination sessions were held in January 2018 and May 2018.

Following the hearings, the Planning Inspector wrote to the councils to say he agreed with the councils' figures for housing growth up until 2033.

This means at least 2,186 homes need to be built across North Essex each year.

That means:

- 716 each year in the Braintree District
- 920 each year in the Colchester Borough
- 550 each year in the Tendring District

The Planning Inspector also said that while he commended the councils' ambitions for high-quality, strategic-scale development in North Essex he raised concerns with some elements of the Local Plan specifically around the garden communities. He suggested further steps that he considered necessary in order for the Section 1 part of the plan to be made sound and legally-compliant.

You can read all correspondence with the Planning Inspector online here: www.braintree.gov.uk/lpexamination

The three councils have been working together to provide more evidence for the Planning Inspector to address his concerns. The Local Plan process was officially paused while this additional evidence was collected.

The additional evidence was published online in June 2019. The evidence has been considered by Braintree District Council's Local Plan Sub Committee in July 2019. It was approved by Braintree District Council's Full Council in August 2019.

The evidence was also approved by elected members at Colchester Borough Council and Tendring District Council.

The evidence is now out to public consultation **until 5pm on Monday 30th September 2019.**

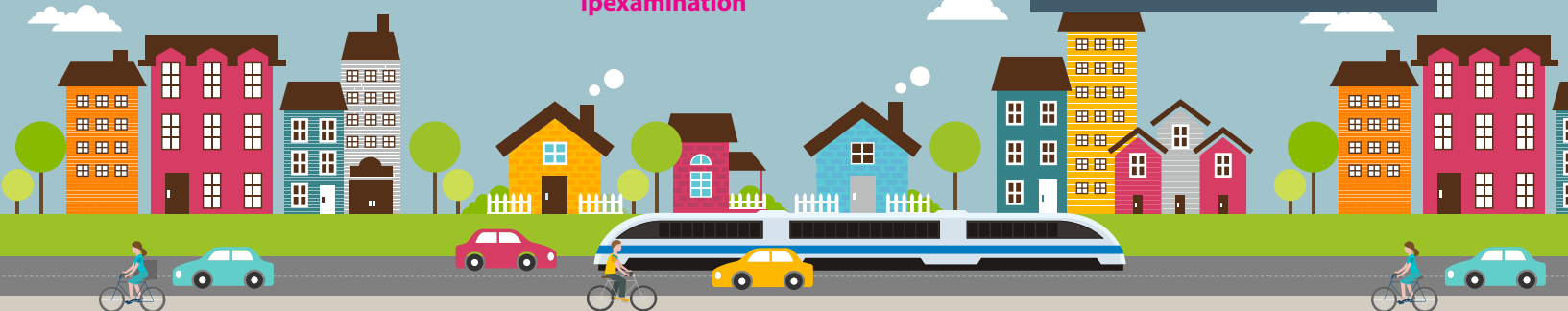
Everyone who has previously made representations on the Section 1 Plan has been informed of the consultation via email or letter but we have also produced this document in order to highlight the consultation to all residents in the district.

After the consultation has closed the Planning Inspector intends to hold further hearing sessions as part of his examination of the soundness and legal compliance of the Section 1 Plan.

Those responding to the consultation are invited to indicate whether they wish to appear at further hearing sessions.

Take a look at **page 4** for more details of the consultation.

Section 2 relates to sites for development, housing, employment, regeneration solely in the Braintree District. The examination for Section 2 will follow.



WHY GARDEN COMMUNITIES?

Braintree, Colchester and Tendring have a legal requirement to provide for more than 2,000 homes each year. There are limited 'brownfield' sites available, so the options are effectively either allowing towns and villages to continue to expand, which is not particularly sustainable and has a big impact on services and infrastructure or look at creating new communities.

It is less sustainable to keep adding large scale housing developments on the edges of our urban areas. These are for the most part small market towns and villages with limited capacity in terms of shops, services and transport links and they are not capable of dealing with unlimited population increases.

The garden communities, which would be built over 40-50 years, are the long-term strategy of the three North Essex councils, in partnership with Essex County Council, to help meet the future growth of the area in a more strategic way.

The three garden communities (West of Braintree up to 13,500 homes, Colchester/Braintree borders up to 24,000 homes and Tendring/Colchester borders up to 9,000 homes) are an opportunity to plan for infrastructure in a more joined up, considered and comprehensive way.

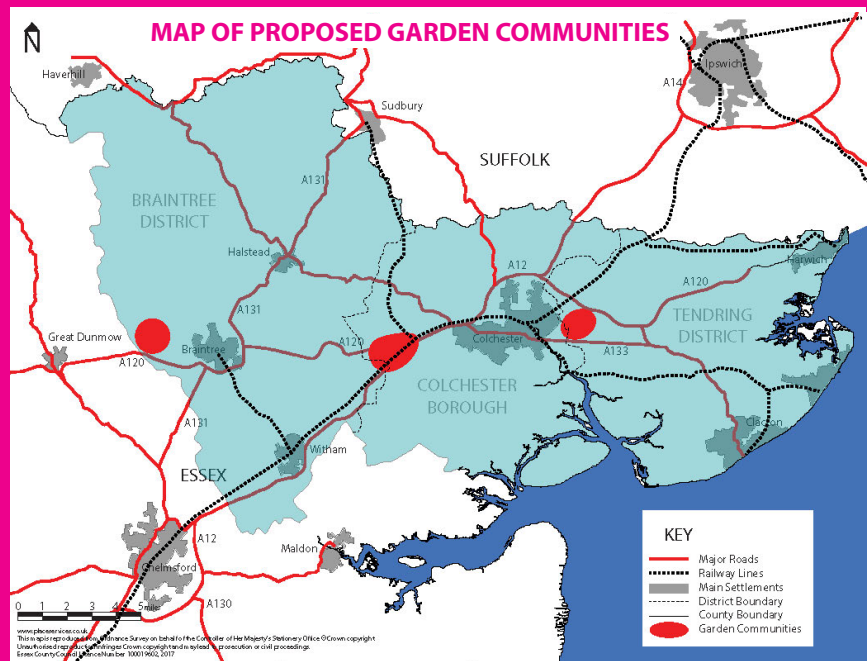
Residents are rightly concerned about their access to education, health care and transport. The garden communities offer the chance to plan all this in from the start, an active, inclusive whole community built with today's modern requirements in mind.

This would mean essential facilities are available as communities grow rather than delivered late, in a piecemeal way, or never provided.

If the garden communities are not progressed, then those homes – both now but more crucially in future years – will need to be built elsewhere within North Essex.

This will most likely be by expanding our towns and villages.

The garden communities make a relatively small contribution to the current Local Plan but every five years the Local Plan must be rolled forward and more homes need to be provided. The continued expansion of our existing towns and villages is unsustainable and by making decisions now we are securing the long term growth of the district for the benefit of all residents.



WHAT CONSULTATIONS HAVE ALREADY TAKEN PLACE?

The Local Plan has been a chance for the whole community to talk about the housing, employment and infrastructure we need.

These are the consultations carried out:

2014 Call for Sites

2015 Issues and Scoping consultation – 1,450 responses back

2016 Draft Local Plan consultation – more than 3,000 responses back.

2017 Publication Draft Local Plan consultation – 1,700 responses back.

2017/18 Issues and Options consultation for each of the garden communities – more than 700 responses back.



THE CONSULTATION

TECHNICAL SECTION 1 EXAMINATION 2019

This consultation is on the additional evidence requested by the Planning Inspector. Detailed proposals will come later, reflecting the needs of each garden community.

WE ARE CONSULTING ON THE FOLLOWING DOCUMENTS:

Additional Sustainability Appraisal

This is an assessment of the environmental effects, and social and economic issues of policies, proposals and alternative strategies, used to inform the preparation of the Local Plan.

Habitats Regulations Assessment North Essex Authorities Strategic S1 Local Plan

This is an assessment of the likely effects of development proposed in the Local Plan on wildlife sites of European importance for example the Blackwater Estuary.

Modal Share Strategy for the North Essex Garden Communities

This is a document looking at the way people can be influenced to travel using alternatives to the car.

Infrastructure Order of Costs Estimate

A review of the cost of infrastructure works associated with the development of homes and jobs across the three new garden communities in North Essex.

Build Out Rates at the Garden Communities

This document reviews evidence and publications which explore how to boost housing buildings rates and evidence on high build out rates which have been achieved in other parts of the country.

Delivery Mechanisms Position Statement

This is a document looking at the available delivery mechanisms for the garden communities.

Section 1 Viability Assessment Update

This is a document which tests the economic viability of garden community proposals taking into consideration updated cost and value assumptions and including the costs of the Rapid Transit Study.

State Aid Position Statement

A brief summary of the application of state aid law to the North Essex garden community proposals.

Employment Provision for the North Essex Garden Communities

This is a document which sets out the amount of employment land required at each garden community.

Infrastructure Planning, Phasing and Delivery

This report demonstrates the phased manner in which infrastructure will be delivered alongside new homes at the garden communities.

North Essex Rapid Transit System: from Vision to Delivery

This explains how a high quality, frequent and rapid public transport system could be created.


Proposed Amendments to the Section 1 Plan

The North Essex Authorities have also compiled a table of proposed amendments to the Section 1 Plan which aim to address certain issues identified by the Planning Inspector, partners and consultees.


All these documents can be viewed online at

 www.braintree.gov.uk/NEAtechS1

You can have your say by registering on our online portal and giving your comments on the documents.


 www.braintree.gov.uk/consultnea

Find out more visit

 www.braintree.gov.uk/NEAtechS1

Get in touch with the team:

 localplan@braintree.gov.uk

 01376 552525

Planning Policy
Braintree District Council
Causeway House
Bocking End
Braintree
Essex
CM7 9HB

The evidence is now out to public consultation until 5pm on Monday 30th September 2019.

NEED THIS DOCUMENT IN A DIFFERENT FORMAT? PLEASE CALL 01376 552525



Braintree D. Council @BraintreeDC · Aug 28

We are consulting on additional evidence being submitted to the Planning Inspector supporting the development of three new garden communities in #Braintree, #Colchester and #Tendring.

Find out more: bit.ly/2Mpxatw #Localplan #Planning #Homes #infrastructure

Braintree D. Council @BraintreeDC · Sep 2

We're out to consultation on additional evidence supporting 3 garden communities in Braintree, Colchester & Tendring braintree.gov.uk/NEAtechS1

Find reference copies of the evidence at our reception, Braintree Library (upstairs), Halstead Library & Witham Library.

Braintree D. Council @BraintreeDC · 21h

There are just 2 weeks left to have your say on the 12 documents being submitted to the Planning Inspector supporting the development of 3 new garden communities in Braintree, Colchester & Tendring.

View and comment on the documents here: braintree.gov.uk/NEAtechS1

Braintree D. Council @BraintreeDC · Sep 9

A new rapid transit system forms part of #LocalPlan proposals for new garden communities across North Essex.

Have your say on the additional evidence being submitted to the Planning Inspector here: braintree.gov.uk/NEAtechS1

Braintree District Council

13 September at 10:29

There is just over two weeks left to have your say on the 12 documents of additional evidence being submitted to the Planning Inspector supporting the development of three new garden communities in Braintree, Colchester and Tendring.

The consultation will run until 5pm on Monday 30 September.

Residents can make their views known by going to www.braintree.gov.uk/NEAtechS1... See more

7 22 comments 25 shares

GUIDANCE NOTES & RESPONSE FORM

- to accompany the North Essex Local Plan Examination Technical Consultation 2019

Tendring
District Council



Local Plan
COLCHESTER BOROUGH



Please read these guidance notes before completing the response form

Introduction

Braintree District Council, Colchester Borough Council and Tendring District Council (the North Essex Authorities) have prepared a shared strategic Section 1 of their Local Plans in order to comprehensively plan for the future of North Essex. This shared section contains a commitment to meet the sub-region's housing, jobs and infrastructure requirements through the planning and delivery of three new Garden Communities at Colchester Braintree Borders, Tendring Colchester Borders and West of Braintree.

The North Essex Authorities' Section 1 was submitted to the Secretary of State in October 2017 and an Examination in Public was carried out at the beginning of 2018. Following the appointed Planning Inspector's post hearing session findings (see 8th June letter) the Authorities have been working on the following documents to address the issues raised by the Inspector:

- ◆ Revised evidence base - 10 documents
- ◆ Additional Sustainability Appraisal
- ◆ Suggested amendments to Section 1

These documents have now been approved by the North Essex Authorities for public consultation between 19th August and 30th September. All consultation responses will be sent to the Inspector for his consideration prior to his making a decision to resume the Examination in Public.

If you would like assistance in completing your representation or have any other questions about the Publication Draft Local Plan please contact the Planning Policy Team by email planningpolicy@braintree.gov.uk or by phone on 01376 552525 and ask for Planning Policy.



Part A - Personal Details

Please note that it is not possible for representations to be considered anonymously. Representations will be published on the North Essex Councils' consultation portal and forwarded to the Inspector. Address and contact details will be removed from published responses. (Village/town will be shown).

The Authorities reserve the right not to publish any representations which they considers offensive or defamatory.

Please supply a postal address and email address if you have one. Future contact preferences can be indicated at the end of the form.

If an agent or consultant has been engaged to act on your behalf please fill in both sets of details in full. Correspondence will be sent primarily to the agent.

Part B - Representation

Comments are invited on:

1. Revised Evidence Base Documents

There are ten Evidence base documents - please specify to which document your response refers.

2. Additional Sustainability Appraisal

This is an assessment of the environmental effects, and social and economic issues of policies, proposals and alternative strategies, used to inform the preparation of Local Plans.

3. Suggested Amendments to the North Essex Authorities' Shared Section 1

The North Essex Authorities have compiled a table of proposed amendments to the Section 1 Plan which aim to address certain issues identified by the Planning Inspector, partners and consultees.

For each response please specify the document and/or section you are commenting on and provide a summary (this will ensure an accurate summary is provided to the Inspector).

Responses on multiple documents and points are welcome - however please use a separate form for each evidence base document in order that your response can be processed against the correct document.

Please explain the reasoning behind any suggested amendments or text

Duplicate responses are unnecessary. You need only respond using the North Essex Authorities' online system for this consultation or to localplan@braintree.gov.uk. All representations received by the three authorities relating to shared Section 1 of the Plans will be processed centrally.

If you require more space to comment please attach additional sheets to this response form and ensure they are clearly labeled with your name.

For internal Use only	ID:		Rep No:	

RESPONSE FORM

North Essex Local Plan Examination Technical Consultation 2019

Please see guidance notes

Responses are encouraged via the council's online consultation system available on the website, see www.braintree.gov.uk/NEAtechS1 However, this form can be returned electronically to localplan@braintree.gov.uk or in hard copy if necessary to:

Planning Policy, Braintree district Council, Causeway House, Bocking End, braintree, CM7 9HB

The consultation runs for 6 weeks until 5pm on Monday, 30th September 2019.

This form has two parts: Part A - Personal Details and Part B - Your comments

PART A

1. Personal Details

Title	<input type="text"/>
First Name	<input type="text"/>
Last Name	<input type="text"/>
Organisation (Where relevant)	<input type="text"/>
Address Line 1	<input type="text"/>
Address Line 2	<input type="text"/>
Address Line 3	<input type="text"/>
Post Code	<input type="text"/>
E-mail Address	<input type="text"/>
Telephone Number	<input type="text"/>

2. Agent's Details (if applicable)

Title	<input type="text"/>
First Name	<input type="text"/>
Last Name	<input type="text"/>
Organisation	<input type="text"/>
Address Line 1	<input type="text"/>
Address Line 2	<input type="text"/>
Address Line 3	<input type="text"/>
Post Code	<input type="text"/>
E-mail Address	<input type="text"/>
Telephone Number	<input type="text"/>

REPRESENTATION FORM

1. Revised Evidence Base:

Do you have any comments to make on the additional evidence base documents that have been prepared by the North Essex Authorities in response to the Inspector's interim findings? Please specify which document your comments relate to by choosing one of the following:

North Essex Rapid Transit System: from Vision to Delivery

Modal Share Strategy for the North Essex Garden Communities

Employment Provision for the North Essex Garden Communities

North Essex Authorities: Build Out Rates at the Garden Communities

Habitats Regulations Assessment North Essex Authorities Strategic Section 1 Local

Plans North Essex Authorities: Delivery Mechanisms Position Statement

North Essex Authorities: State Aid Position Statement

North Essex Authorities: Viability Evidence

North Essex Authorities: Infrastructure Order of Costs

North Essex Garden Communities: Infrastructure Planning, Phasing and Delivery

If you are commenting on a specific part of a document please specify which paragraph or section:

If you require more space to comment please attach additional sheets to this response form and ensure they are clearly labeled with your name and the document(s) you are commenting on.

Continue onto next page

**If your representation is more than 400 words, please provide a brief summary here:
(this will ensure an accurate summary is provided to the Inspector):**

2. Additional Sustainability Appraisal

Do you have any comments to make on the Additional Sustainability Appraisal which has been prepared by independent consultants in response to the Inspector's interim findings?

If you are commenting on a specific part of the document please specify which paragraph or section.

If your representation is more than 400 words, please provide a brief summary here (this will ensure an accurate summary is provided to the Inspector):

3. Suggested amendments to the North Essex Authorities' shared Section 1 of their Local Plans

Do you have any comments to make on the suggested amendments to the North Essex Authorities' shared Section 1 of their Local Plans?

Please note where the suggested amendments materially affect the plan's policies, they can only be made if the Inspector considers they are necessary to make the plan sound and/or legally compliant.

Please ensure your comments relate to specific suggested amendments and that your response clearly specifies which suggested amendments you are commenting on.

If you propose any changes to the suggested amendments or to the text of the shared Section 1 Plan you should explain why they are needed to make the plan sound and/or legally compliant.

To which Suggested Amendment/text does your comment relate?

Comments:

4. Further details

Do you wish to participate at future oral hearing session(s) of the Section 1 Local Plan Examination?

Yes No

If you wish to appear at future oral hearing session(s), please outline why you consider this to be necessary.

Please note the Inspector will determine the most appropriate procedure to adopt to hear those who have indicated that they wish to participate in future hearing session(s)

Have you made representations to the North Essex Authorities earlier in the process of preparing the shared Section 1 of their Local Plans?

Yes No

If you answered 'yes', at which stage have you made representations?

Issues and Options/Issues and Scoping
 Preferred Options
 Pre-submission Draft
 Additional Sustainability appraisal Methodology

Do you wish to be notified?

When the Inspectors Report is published?

When document is adopted?

Would you like to be added to our mailing lists:

Braintree District Council

Colchester Borough Council

Tendring District Council

Return by 5pm 30th September 2019

Localplan@braintree.gov.uk

Braintree District Council, Causeway House, Bocking End, Braintree. CM7 9HB
responses will not be accepted after this date.

North Essex Local Plan Examination Technical Consultation 2019

HAVE YOUR SAY

Consultation open
**19 AUGUST -
30 SEPTEMBER**

