

# Braintree District Community Safety Partnership

## Annual Report 2022-23



# Braintree District Community Safety Partnership Annual Report 2022-23

## Foreword

The Braintree District Community Safety Partnership Annual Report outlines how local agencies have worked together to make the Braintree District a safer place and reduce the fear of crime during 2022-23.

The Crime and Disorder Act 1998 placed a joint responsibility upon specific agencies and other partners within the community to develop and implement strategies to protect their communities from crime and help people feel safe.

Throughout the year partners have worked together to deliver successful projects and initiatives against the identified priorities to:

- **Protect the vulnerable**
- **Promote healthy relationships**
- **Keep safe online**
- **Build community resilience**
- **Promote safety in our communities**

Many of these are aimed at raising awareness, education and prevention as we feel these add value to the work delivered by local agencies on a daily basis.

We are proud of the achievements the Partnership has made and look forward to another successful year.



**Cllr Frankie Ricci**

Chair, Braintree District  
Community Safety Partnership

Cabinet Member for Communities  
Braintree District Council

**Tracey Parry**

Community Services Manager  
Braintree District Council

## Responsible Authority Group

The Responsible Authority Group is the strategic group of the Braintree District Community Safety Partnership and consists of strategic and operational officers who are collectively responsible for addressing crime, disorder and community safety across the Braintree District.

These organisations include Braintree District Council, Essex Police, Essex County Fire & Rescue Service, National Probation Service, NHS Mid & South Integrated Care Board, Eastlight Community Homes, Essex County Council (Education) and Community360 (voluntary sector).

The group has overall strategic responsibility for making sure that the priorities identified from the annual Strategic Assessment are outlined within the Action Plan, and the projects within the Action Plan are delivered.

## Strategic Assessment

Each year the Community Safety Partnership is required to produce a Strategic Assessment report about crime and disorder levels in its area. The results of the Strategic Assessment are used by the Partnership to identify themed priorities for the coming year. The Partnership produces an Action Plan which describes how it will deliver on the identified priorities.

The Strategic Priorities for 2022-23 were:

- Protect the vulnerable
- Promote healthy relationships
- Keep safe online
- Build community resilience
- Promote safety in our communities

## Funding

The Office of the Police, Fire and Crime Commissioner for Essex (OPFCC) allocated grants from its 2022–23 Community Safety Fund to all Community Safety Partnerships across the county. As in previous years the OPFCC set aside a proportion (4%) of this funding for Domestic Homicide Reviews (DHRs). This fund provides: co-ordination of the DHR process; administration of DHR panels; funding for independent chairs; lesson learning seminars; and monitoring and reporting on DHR recommendations implementation.

The funding formula is based on population size, deprivation and crime levels.

Braintree District Community Safety Partnership received a funding allocation of £17,739 for 2022-23.

## Action Plan 2022-23

Braintree District Community Safety Partnership produces an annual Action Plan which underpins the priorities and sets out how local agencies will work together to meet the actions within the plan.

Actions include specific projects and initiatives put forward by partner agencies, which are then collectively agreed by the Responsible Authority Group.

## Key Achievements 2022-23

### Safeguarding vulnerable young people on public transport

Braintree took part in the countywide Operation Henderson campaign, a joint initiative organised by Essex Safeguarding Children Board together with British Transport Police, Essex Police, the Violence and Vulnerability Unit, Rail Operators, Essex Youth Service, local councils and The Railway Children. It aims to raise awareness of the vulnerability of young people to exploitation and abuse at stations and transport networks in parts of Essex.

Research and local data have shown transport networks are used by vulnerable young people who may be at risk of sexual exploitation, criminal exploitation and trafficking. Young people often gravitate towards stations because they are traditionally busy, anonymous places that also provide some form of shelter and access to food and drink. Bus and rail networks can also be used by offenders to traffic young people for the purpose of sexual and criminal exploitation.

As well as members of the public, all staff working within and around a station, from ticket collectors to engineers, coffee shop workers to cleaners, play an important role in safeguarding vulnerable young people.



## Spot It Stop It - raising awareness of Child Exploitation

Work has continued to develop and expand the Spot it Stop it scheme to raise awareness of child exploitation.

The scheme encourages businesses to sign up to receive awareness training to increase their knowledge of child exploitation including the signs to look out for and how to report concerns.

The training it delivers helps to reassure the public, parents and carers that premises are a safe place for young people to visit; that child exploitation is taken seriously and will not be tolerated.

30 youth football coaches from Braintree Football Club received Spot It Stop It training, delivered by Braintree District Council's Children, Young People & Safeguarding Officer. The project has also joined up with the countywide 'Operation Henderson' which aims to raise awareness of the vulnerability of young people to exploitation and abuse at stations and transport networks.

To date more than 100 members of staff from commercial premises where young people may visit - including McDonalds, Cineworld, Premier Inn and Pizza Hut – have received an input and/or training.



## Mobile cameras help tackle crime and disorder

The CSP has continued to fund the purchase of mobile cameras to be deployed to areas where there is believed to be criminal or anti-social behaviour occurring. The cameras are installed by the Council's street-scene enforcement team following requests and discussion by multi-agency partners.

To date, useful evidence has been used by officers to disrupt the suspected supply of Class A drugs by known gang nominals; target prolific shoplifters; identify and deter identified individuals from causing anti-social behaviour including fly-tipping; and to assist in gathering evidence to put in place enforcement action such as Closure Orders.



## 'Chelsea's Story' child exploitation theatre production in schools

More than 600 young people have learnt about healthy relationships, consent and exploitation after watching a powerful play organised by Eastlight Community Homes, and funded by the CSP.

Educational theatre group, Alter Ego Creative Solutions, performed 'Chelsea's Story' at three secondary schools in the district – New Rickstones Academy, Tabor

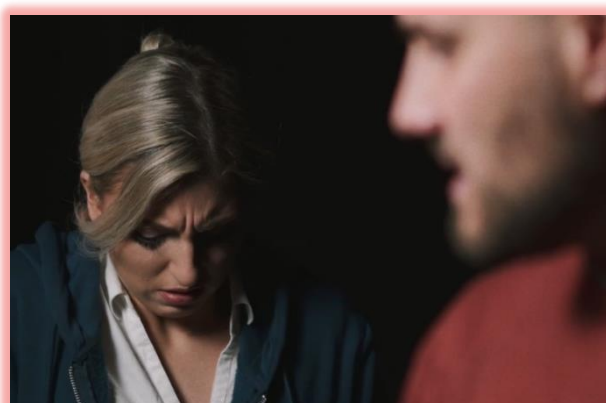
Academy and Notley High School – in February and March 2023.



The play creatively tackles the issue of child sexual exploitation, exploring the different ways that young people can be drawn into abusive relationships and illustrating some of the consequences.

The production tells the story of a group of students who discover the diary of a girl called Chelsea. Chelsea was a 15 year old girl who, having fallen out with her friends and family, met a guy called Gary. Gary was kind, understanding, had a nice car, had his own flat and listened to her. Unfortunately Gary was not what he seemed to be. Chelsea's story is played out and examined by the students who, along with their teacher, attempt to understand what happened to Chelsea.

Issues covered include - What makes a Healthy Relationship; What makes an Unhealthy Relationship; Safe Internet Use/Sexting; What is Consent; The Grooming Process, Child Sexual Exploitation & the differing methods; Avoiding Victim Blaming, and Where to go for help & advice.



For professionals it also raises Awareness of 'The Warning Signs of CSE', and awareness of the journey that young people may have been on that has resulted in them being exploited – a journey that can all too easily make it seem as though they have 'made their own choices' and can leave them not seeing themselves as victims and fighting against any intervention.

## Local Exploitation Group offers early intervention to young people at risk

The partnership has continued to build upon the success of its Local Exploitation Group aimed at providing early intervention to vulnerable young people at risk of Child Sexual Exploitation (CSE) or Criminal Exploitation (CE) before it escalates to a 'high risk' level.

A core group of key local partners - including Family Solutions, The Children's Society, Education, Essex Youth Service, Essex Child & Family Wellbeing Service, Essex Police and Braintree District Council - meet regularly, prior to MACE meetings, to discuss current issues and to determine whether any intervention can be implemented to avoid young people becoming involved in CSE or CE, and to escape potential perpetrators.

Aims of the group are to coordinate partnership work and identify disruption activities; identify local hotspots and vulnerable locations where young people are associating with each other; develop tailored and effective plans to deal with local hotspots; engage with young people as to what areas feel 'safe' or 'unsafe' for them and initiate action plans for these areas; and develop and deliver awareness campaigns aimed at children and young people, parents and carers, businesses and the wider community.

Previously the group has provided funding to an isolated and vulnerable young person who had been criminally exploited, to enable them to take part in dog training classes with the aim of building their confidence and self-worth.



## Child to Parent Violence and Abuse course

Parents affected by abuse and violence from their own children have been given extra support thanks to a new course delivered in the district.

The 12-week course was created by Next Chapter, and delivered in partnership with Essex County Council's Family Solutions, after professionals noticed an increase in the number of families they were working with affected by the issue.

This was brought to the attention of the CSP's Community Safety Hub, where professionals from a range of organisations meet regularly to discuss new or emerging issues that require a multi-agency solution. The CSP agreed to fund a 12-week course for identified families.



## Fire service delivers education and support

Essex County Fire & Rescue Service (ECFRS), conducted 302 Safe and Well visits to offer personal safety advice and signpost residents to appropriate support services.

157 home fire safety checks were also carried out, and 115 safeguarding referrals made for vulnerable people across the year.

ECFRS' Education Officers delivered a total of 117 educational inputs to schools across the district, reaching 11,974 pupils.

Sessions focused on key themes including Cyber Safety; Firework/Halloween Campaign; Gang Awareness and Knife Crime; Hate Crime; Healthy Relationships; 'Respect' assemblies' and road traffic and pedestrian safety, among others.



## Support for people at risk of homelessness or experiencing domestic abuse

The CSP has introduced two new sub-groups of the Community Safety Hub, with the aim of providing multi-agency support and intervention for individuals at an early stage.

The Housing Support Sub-Group has been established to provide a forum for information sharing and decision-making for more complex cases where a person has previously been identified as vulnerable and has caused anti-social behaviour to others, and where contact has been made with the local authority for homelessness advice or an application made to the housing register.

Where appropriate the individual concerned will be invited to attend these meetings in person to ensure they are engaged in the process and work together with professionals to determine their own action plan in a strengths-based approach.

The Domestic Abuse Sub-Group is for domestic abuse cases where the individual has contacted the local authority for homelessness advice or an application made to the housing register.

Joint working between relevant agencies support an informed assessment of risk levels and enable evaluation of appropriate measures and interventions to manage risk and explore the role of statutory homelessness functions and the housing allocation scheme.



## 'J9' Domestic Abuse training



The CSP commissioned the charity Safer Places to deliver 'J9' training – an initiative to raise awareness and to help victims of domestic abuse following the death of Janine Mundy, in Cornwall where she lived, in 2003.

Two sessions were held to help raise awareness and increase knowledge and understanding of domestic abuse for staff in the public and the voluntary sectors including GP surgeries, veterinary practices, opticians, dental practices and community organisations. A half-day session took place in November 2022, hosted by Witham Town Council. The second session took place in Braintree in February 2023.

Where the J9 logo is displayed it alerts victims that they can obtain information to help access a safe place where there can seek information and the use of a telephone.

## World Cup domestic abuse campaign

The CSP delivered a social media awareness campaign during the 2022 football World Cup reaching more than 10,000 people.



The campaign targeted both victims and perpetrators to raise awareness of Domestic Abuse and promote the services available to keep victims safe and help perpetrators acknowledge and address their behaviour.

Research shows that there is an 38% increase in incidences of Domestic Abuse when England play if they lose and 26% if they win or draw.

There is a 47% increase in alcohol related Domestic Abuse cases on days England win and an 18% increase on days after an England match.

Posters were also created, distributed and displayed in licensed premises across the district; and ten paid social media messages were delivered via Facebook and Twitter ahead of, and after key moments of the tournament. More than 10,000 people were 'reached' through these messages, and 216 people actively engaged with the posts.

## Moving Forward

Braintree District Community Safety Partnership has received a funding allocation of £17,739 for 2023-24 from the Office of the Police, Fire and Crime Commissioner for Essex (PFCC).

In 2023-24 the Strategic Priorities of Braintree District Community Safety Partnership will be:



These priorities, along with the core responsibilities of the CSP – to reduce crime and disorder, to reduce re-offending and combat the misuse of drugs, alcohol and other substances – will inform Braintree CSP's Action Plan for 2023-24.

The Partnership will address these priorities through the identification of agencies and resources that are best placed to respond and deliver improvements.

## Find out more

If you would like further information about us and our services, please get in touch:

### **Braintree District Community Safety Partnership**

c/o Braintree District Council  
Causeway House  
Bocking End  
Braintree  
Essex CM7 9HB

Tel: **01376 552525**

Email: [communityservices@braintree.gov.uk](mailto:communityservices@braintree.gov.uk)