

J5 - London Road West

- 3.3.29 *'The character of this area is dominated by the Parish Recreation Hall and associated large open playing fields. A row of semi-detached, mixed aged houses line the road, which is immediately parallel to the A12. There is little sense of separation between houses and the road corridor, with small patches of vegetation in places and a mixture of front walls, although the houses do not actually line the A12, and are accessed via a parallel, dead-end road. Character is generally fragmented and incoherent.'*

Landscape Designations

- 3.3.30 There are no landscape designations within the Study Area.

Visual Amenity

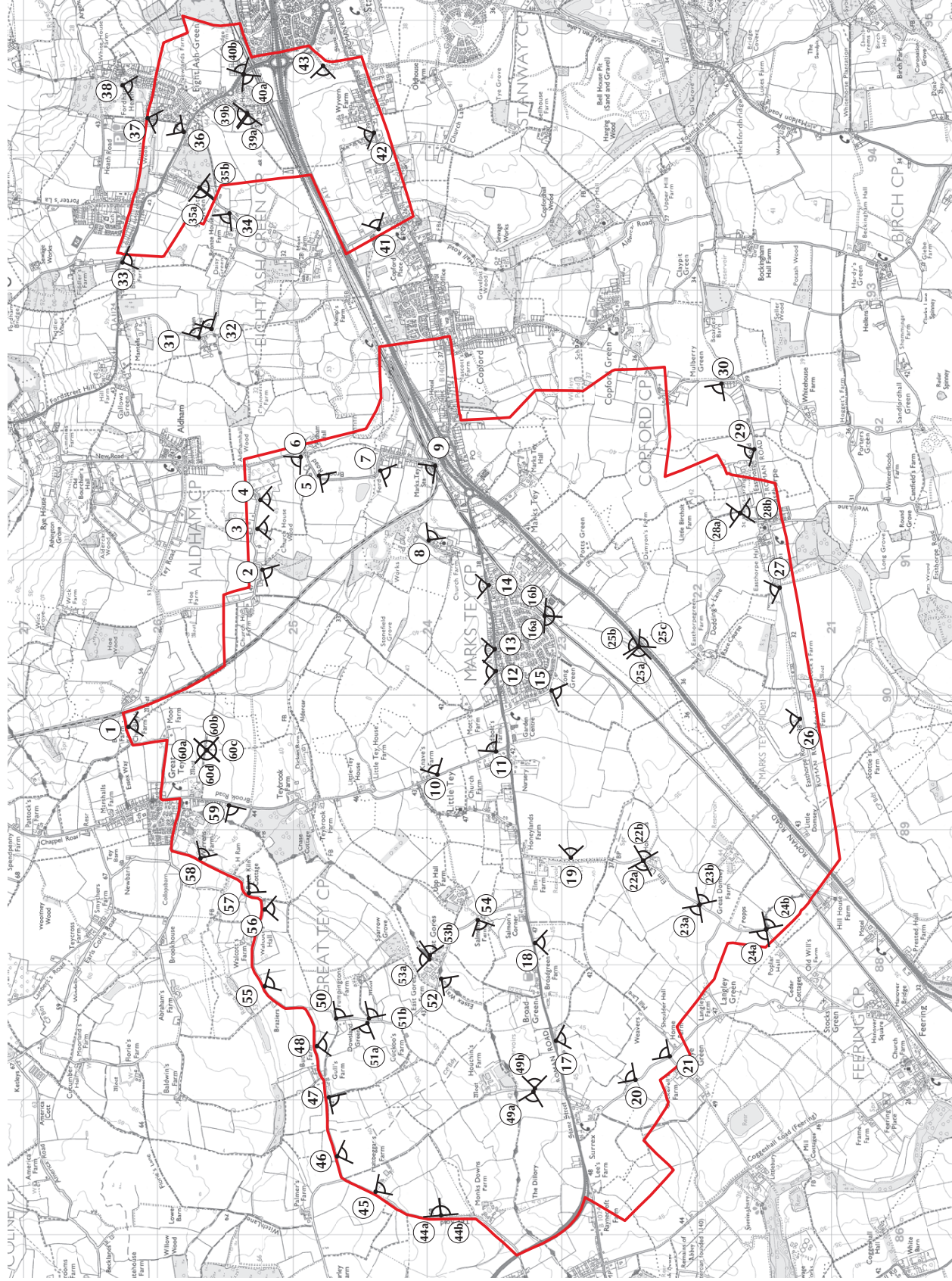
- 3.3.31 Field work was undertaken to validate the Zone of Theoretical Visibility (ZTV) mapping (see **Figure 3.1**). This has established that the actual Zone of Visual Influence (or visual envelope) of the Site is considerably more limited than the ZTV suggests.
- 3.3.32 An appraisal of the Study Area's visual amenity has been made following fieldwork and reference to 1:10,000 and 1:25,000 scale Ordnance Survey maps of the area. In addition, a series of colour photographs have been taken from viewpoints within the Site that are representative of views accessible to the public (see **Figure 3.7**).
- 3.3.33 All photographs were taken in September 2015 and their locations are indicated on **Figure 3.7**. It should be noted that the screening effect of vegetation will be diminished during winter when deciduous vegetation is not in leaf. The photographs are presented on **Figure 3.8** and described below:

Viewpoint 1

- 3.3.34 Viewpoint 1 shows a long distance view southwards from approximately 1km to the north of the site boundary from the road at Checkley's Farm. The view shows the typically partial screening of views towards the south by the varied trees, hedgerows and woodland found along the field boundaries within the site, and demonstrates the small change in topography which adds to the limitation of visibility of the site from this direction, giving only distant, glimpsed views of the site itself.

KEY

- Site Boundary
- Viewpoint



Based upon the Ordnance Survey Map with the permission of the controller of HM Stationery Office. © Crown Copyright Licence number - 10007241



VP 1



VP 2



VP 3



VP 4



VP 5



VP 6



VP 7



VP 8



VP 9



VP 10



VP 11



VP 12



VP 13



VP 14



VP 15



VP 16a



VP 16b



VP 17



VP 18



VP 19



VP 20



VP 21



VP 22a



VP 22b



VP 23a



VP 23b



VP 24a



VP 24b



VP 25a



VP 25b



VP 25c



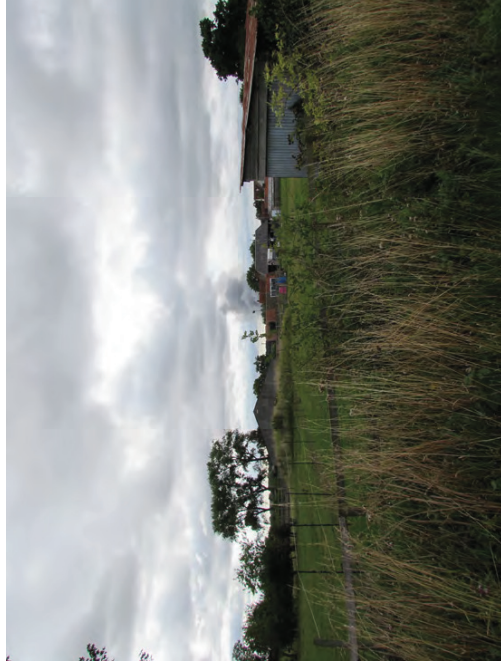
VP 26



VP 27



VP 28a



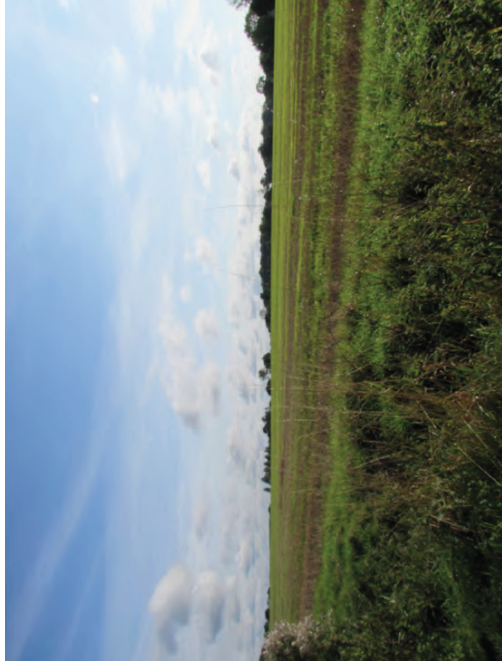
VP 28b



VP 29



VP 30



VP 31



VP 32



VP 33



VP 34



VP 35a



VP 35b



VP 36



VP 37



VP 38



VP 39a



VP 39b