

Average waiting times for a 2 bedroom house in the Braintree District

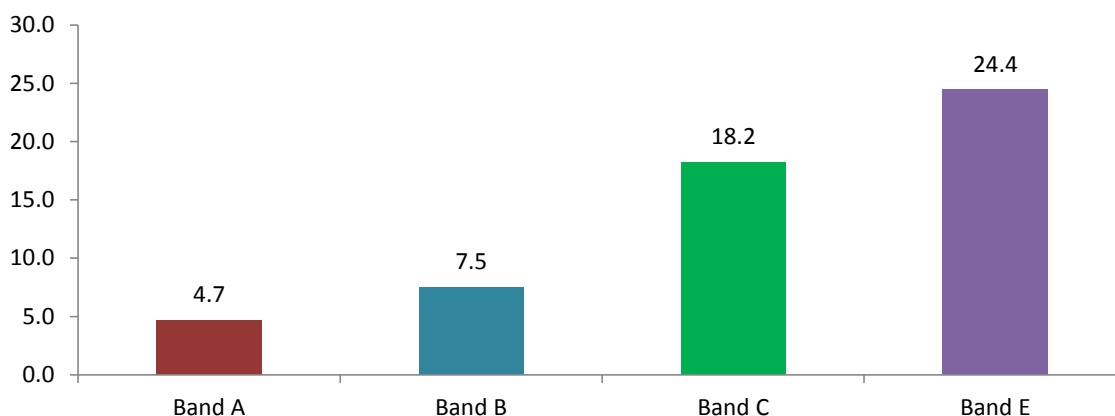
Waiting times are shown in months. These are the mean average waiting times from the date an applicant was accepted on the system in a specific band to the date they accepted an offer on a home.

These times are based on all lets from 01 April 2009 to 31 March 2014.

Total sample size of 2 bedroom houses let in the District in the period:

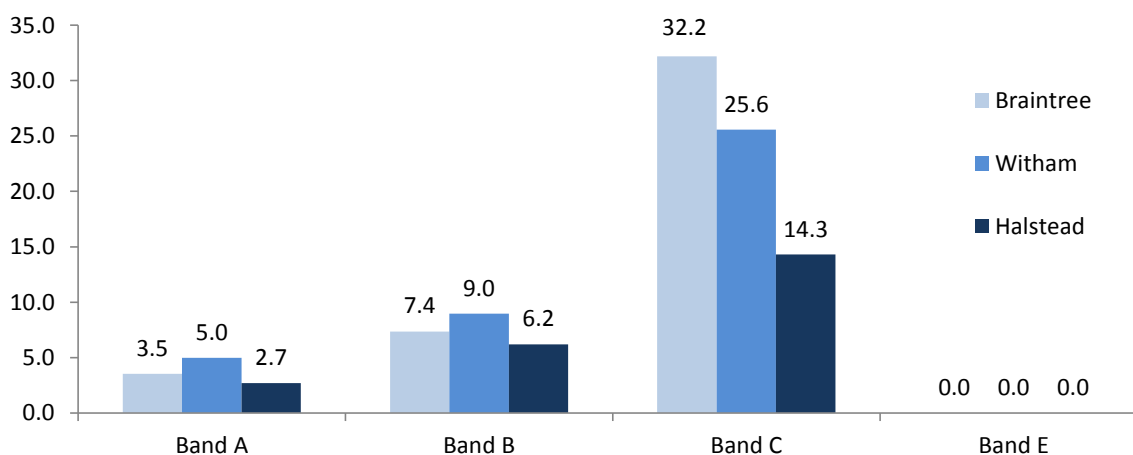
Band A	Band B	Band C	Band D	Band E	TOTAL
36	344	49	0	23	453

District Average waiting time in months for a 2 bedroom house



A zero waiting time does not represent 0 months' wait - it shows that there has been no data (or too small a sample of data) to provide an average waiting time.

The District's three towns - Average waiting times in months for a 2 bedroom house



A zero waiting time does not represent 0 months' wait - it shows that there has been no data (or too small a sample of data) to provide an average waiting time.

**Applicants with a Band A or B priority awarded because they are downsizing have been removed from the data, as there is a tendency for waiting times to be longer for these applicants as they wait for their preferred property or location to become available compared to those applicants not downsizing.*